



# Heartfelt

Your **home** is uniquely yours because it reflects your **personality** and passions. The style might be country or modern. Because of you, it has **heart**.







# For Love of Country

A BUILDER'S  
PASSION FOR  
DETAIL TURNED  
A 1970S CAPE COD  
INTO A RUSTIC,  
RESTFUL RETREAT  
FOR A YOUNG  
FAMILY.

A much-used pine farm table, *left*, fits the family's lifestyle. "Thanks to my children, it's got a nice patina," says homeowner Cathy Funston.

To give the house a more authentic Colonial look, builder Chuck Taylor replaced three sets of double-hungs with large divided-light windows, *right*.

BY SHARON OVERTON  
PHOTOS MICHAEL PARTENIO  
PRODUCED BY KARIN LIDBECK-BRENT



Chuck Taylor, a Connecticut builder, saw a run-down Cape Cod with potential—and chickens roosting in the living room. Cathy and Reid Funston wanted a country getaway near family. Little did they know it would be a match made in heaven.

The poultry was long gone when the Funstons toured the house a year after Taylor had purchased and remodeled it. At about 2,000 square feet, it would be a snug fit for the family of six. But by raising ceilings and removing interior walls, Taylor had made once-cramped rooms live larger. He found space for cozy nooks and clever built-ins, and he added antique wood beams and thick moldings to give the 1970s shell a shot of country character.

“We had been looking at 1810 farmhouses,” says Cathy, “but we quickly realized this one had all the details we wanted, and we would be able to spend time with our kids, rather than renovating.” They called Taylor back in to add a three-season porch, and suddenly there was plenty of space for everyone.

To balance with the rustic stone fireplace and beefy moldings, Cathy chose furniture and colors with a light touch. A robin’s egg blue sofa establishes a calm scheme; she painted living and dining room walls the same blue for easy flow between rooms. Crisp white draws attention to the trim, and honeyed wood floors are covered in easy-care seagrass.

Fuss-free living is important to the Funstons, who relish their country fun—fishing, swimming, picking blueberries, and relaxing.

“All the things that pull at you in everyday life are not here,” Cathy says. “You get a chance to unwind and recharge.” Restful colors, comfortable furniture, and relaxed architecture make that as easy as pie. 🍷

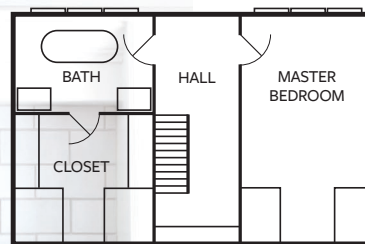
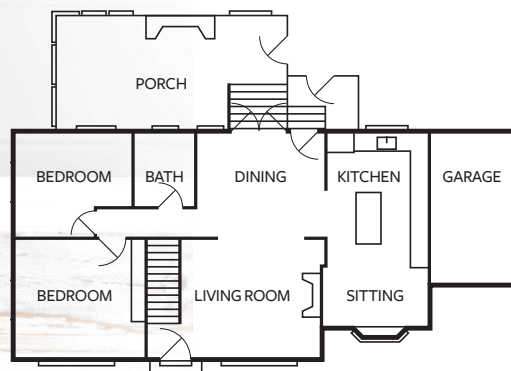






Opening walls between the living and dining areas made the spaces feel larger, as does the paint color, Farrow and Ball's Powder Blue. The stone fireplace is original; builder Chuck Taylor crafted a mantel from antique moldings. Cathy and Reid Funston relax with Taylor, *inset*.





Taylor turned an underused laundry and utility room into a spacious, light-filled kitchen, *left and below*. White cabinetry and subway tile, Vermont marble counters, brushed nickel hardware, and stainless-steel appliances give the room a clean look, while rustic beams and spruce floors add warmth and texture.

In the kitchen sitting area, *right*, an exposed rock wall from the adjacent garage conjures the stony New England landscape outside the bay window. Instead of a kitchen table, Cathy opted for cozy chairs where she can curl up with a book. An antique machinist's table stands in for a bar cart. Open shelves keep glassware within reach.













“Chuck’s design was so clean, simple, and light.  
We wanted the decorating to reflect that.”

CATHY FUNSTON

A decorative arch in the hallway, *right*, introduces the children’s bedrooms. For the twin girls’ room, Cathy found a trellis-pattern wallpaper in her favorite robin’s egg blue.

A fan of screen porches, Reid suggested adding a three-season family room with backyard access, *left*. Cathy repeated the blue and brown color scheme of the indoors here in wicker and pillows.

*For buying information, see page 200.*





## RESOURCES

SOME PRODUCTS SHOWN EDITORIALY IN *BETTER HOMES AND GARDENS*® MAGAZINE CAN BE OBTAINED LOCALLY. FOR MORE INFORMATION OR DEALER LOCATIONS, CONTACT MANUFACTURERS LISTED BELOW.

### OBJECTS OF AFFECTION

**Page 20:** wool felt—Magic Cabin; magiccabin.com. Hole punch, scalloped edge fabric scissors—Fiskars; fiskars.com. Disappearing ink pen, yarn, crochet thread—Jo-Ann Stores; joann.com. Chocolate hearts—Candy Direct; candydirect.com. **Page 22:** striped and checked fabrics in garland, Berta & Berit fabrics—IKEA; ikea.com. Other fabrics—Jo-Ann Fabrics (see previous). Ribbon—Paper Source; paper-source.com. Bed, Attic Heirlooms—Broyhill Furniture; for a dealer 800/327-6944; broyhillfurn.com. Lamp—Target Stores; for a store target.com. Bedding—T.J. Maxx; for retail stores 800/285-6299; tjmaxx.com. Pink crochet throw—Pine Cone Hill (to the trade); for a retail store; www.pineconehill.com.

### PAPER CHASE

**Page 24:** square lampshade with trim, crewel pillows—Pottery Barn; 888/779-5176; potterybarn.com. Bed—Lee Industries; 800/892-7150; leeindustries.com. Blue coverlet—Garnet Hill; 800/622-6216; garnethill.com. **Page 26:** stool—Pier 1 Imports; 800/447-4371; pier1.com. Green linen pillow—Pottery Barn (see previous). Bird pillow, striped pillow, gold geometric pillow—Dwell Studio; dwellshop.com. Coverlet—Garnet Hill (see previous). **Page 28:** green ticking sheets—Pottery Barn (see previous). Hot pink gingham pillow—Pottery Barn Kids; 800/993-4923; potterybarnkids.com.

### FAMILY FRIENDLY

**Pages 37–42:** design—Claire Reeve (many items shown in Claire's home came from her store), Number Four Eleven; 411 Whitaker St., Savannah, GA 31401; 912/443-0065; numberfourteen.com. **Page 37:** wall color (Fresh Butter)—Benjamin Moore & Co.; to find a store benjaminmoore.com. All other items—antique, discontinued, or a personal belonging. **Pages 38–39:** all items—antique, discontinued, or a personal belonging. **Page 40:** upper wall color (Blue Ridge Mountains), blue chair paint, similar color (Waterfall), green buffet (Guilford Green)—Benjamin Moore & Co. (see previous). **Page 42:** green bed (Kiwi)—Benjamin Moore & Co. (see previous).

### EASE INTO COLOR

**Page 53:** “Baxter” sofa, Linen fabric (Beige) #40005W, “Elton” side table—Mitchell Gold & Bob Williams; for retail information 800/789-5401; mgandbw.com. Chair, #5-621002—Norwalk Furniture Corp.; 877/770-3483; norwalkfurniture.com. Porcelain pear vase on end table—Viva Terra; 800/233-6011; vivaterra.com. “Charlotte” lamp, “Galerie” coffee table, customized—Crate & Barrel; 800/967-6696; crateandbarrel.com (product line varies). “Knotty Ice Blue” rug, Garden Collection, “Tutti Colori” throw (Grass), “Pagoda” pillow (Turquoise)—Company C; 800/818-8288; companyc.com. Trim on throw, BHG Collection—Jo-Ann Stores; 877/465-6266; joann.com. Wall color, B24-5 (Strands of Gold), coffee table paint, C33-6 (Nature's Abundance)—Ace Hardware; store locator 866/290-5334; acehardware.com. Pillows, Thomas Paul “Nest” (Green), Thomas Paul

“Blossom” (Shell)—Velocity; 866/781-9494; velocityartanddesign.com. Drapery fabric, Ironwork JD11 (Lichen)—Westminster Fabrics; for store location 866/907-3305; westminsterfabrics.com. **Page 54–55:** pillow, Thomas Paul “Kabuki” (Dove Linen)—Velocity (see previous). Blue throw, “Tutti Colori” (Robin's Egg), pillow, “Pagoda” (Turquoise)—Company C (see previous). White porcelain artichoke, white covered containers—Two's Company; for store locations 800/896-7266; twoscompany.com.

### SHINING EXAMPLE

**Pages 60–63:** architect—Paul Doerner, Lawrence Group Architects, 319 N. 4th St., Ste. 1000, St. Louis, MO 63102; 314/231-5700. Contractor—Landmark Builders, 3350 Greenwood, St. Louis, MO 63143; 314/644-2464. **Page 60:** microwave, ACo1860A—Amana Appliances; 800/628-5782; amana.com. Stove, Rotostar 850GRF—Stoves of America; 781/933-9222. Cooktop—Fisher & Paykel Appliances; 888/936-7872; usa.fisherpaykel.com. Wall color, 2123 (Gossamer Blue); cabinet color, 687 (Annapolis Green)—Benjamin Moore & Co.; 800/672-4686; benjaminmoore.com. Hanging light fixture, Project X by Tobias Grau—Centro Modern Furnishing; 314/454-0111. **Page 63:** hanging light fixture, Project X by Tobias Grau (see previous). Glass tile—Bisazza North America; 800/247-2992; bisazza.com. Cooktop—Fisher & Paykel Appliance, Inc. (see previous). Glass doors on upper cabinets—Kirkwood Glass; 314/966-0272. Installation of glass—Troco LLC; 314/371-4610. Stools, from Group Italia “Lyra”—Mossa Center, Inc.; 314/241-1563. Dishwasher—Miele, Inc.; 800/843-7231; miele.com.

### SEASON'S PROMISE

**Pages 71–75:** pots—Norcal/New England Pottery; 800/366-7687; norcalpottery.com. Bulbs—available now at local garden centers.

### FEBRUARY GARDENER

**Page 76:** birdbath heater, feeder funnel, and Feeder Fresh—Wild Birds Unlimited Nature Shop (selection varies by store); 800/326-4928; to find a store wbu.com.

### SCENIC ROUTE

**Page 85:** container—Andersons La Costa Nursery; 400 La Costa Ave., Encinitas, CA 92024; 760/753-3153; andersonslacostanursery.com.

### BEAUTY

**Page 114:** Cetaphil Gentle Skin Cleanser—mass market retailers nationwide; cetaphil.com. CeraVe Hydrating Cleanser—mass market retailers nationwide; cerave.com. Peter Thomas Roth AHA/BHA Face and Body Polish—select spas and Sephora stores; 800/787-7546; peterthomasroth.com. Aquaphor Healing Ointment—mass market retailers nationwide; 800/227-4703; eucerinus.com. La Roche-Posay Ceralip Lip Repair Cream—through dermatologists and skinstore.com; la-roche-posay.com. Olay Definity Deep Penetrating Foaming Fragrance-Free UV Moisturizer—mass market retailers nationwide; olay.com. Jergens Shea Butter Skin Enriching Cream—mass market retailers nationwide; 800/521-3189; jergens.com. Eucerin Calming Itch-Relief Treatment—mass market retailers nationwide; (see previous). AmLactin Moisturizing

Cream—through dermatologists; drugstore.com; dermstore.com.

**Page 116:** Shu Uemura High Performance Balancing Cleansing Oil—select department stores and Sephora stores; 888/748-5678; shu-uemura-usa.com. Kiehl's Oil-Based Cleanser and Makeup Remover—Kiehl's stores; kiehls.com. Sunsilks Winter Hair products—mass market retailers nationwide; 866/786-7455; sunsilk.com. Neutrogena Triple Moisture Deep Recovery Hair Mask—mass market retailers nationwide; neutrogena.com. Ted Gibson Individual Color hair products—Ted Gibson Salon New York City and tedgibsonbeauty.com; beauty.com; drugstore.com. Keri Long-Lasting Hand Cream—mass market retailers nationwide; 800/452-0051; kerilotion.com. Neutrogena Fast Absorbing Hand Cream—mass market retailers nationwide; (see previous). Dove Cream Oil Intensive Hand Lotion—mass market retailers nationwide; 800/761-3683; dove.com. Vaseline Renewal Age Redefining Hand Lotion—mass market retailers nationwide; vaseline.com.

### FOR LOVE OF COUNTRY

**Pages 121–129:** interior design—Pamela LeBey Wilson, LeBay Ltd. Interiors; 404/310-5222. Contractor—Chuck Taylor, CT Building & Design, P.O. Box 998, Woodbury, CT 06798; 203/768-8475. **Pages 122–123:** sofa, leather chair—Acquisitions; 704/334-2478. Coffee table, urn, dish on table, bird art on mantel, red throw, brown pillow—J. Seitz & Co.; 860/868-0119; jseitz.com. Planters in fireplace—Campo De'Fiori; for retail location campodefiori.com. White chair, lamps, green jug on mantel, green ceramic side table, green pillows—Tulip Tree; 860/868-2802; tuliptreecollection.com. Wall color (Powder Blue)—Farrow & Ball; 888/511-1121; farrow-ball.com. **Pages 124–125:** white dishes, bowls, chopping block, basket, glass jars—New Preston Kitchen Goods; 860/868-1264. Stove, hood—Viking Range Corp.; 888/845-4641; vikingrange.com. **Pages 126–127:** art panel—Tulip Tree (see previous). Plant stand, stone bowl, plant—The Pergola; 860/868-4769. Dining chairs—Acquisitions (see previous). Rug—Jobsons; 404/351-4310. White rectangle bowls—Authantiques; 203/266-9121; authantiques.com. Glasses—New Preston Kitchen Goods; 860/868-1264; newprestonkitchengoods.com. Bar table, stool—Tulip Tree (see previous). Chairs—Acquisitions (see previous). **Pages 128–129:** girl's bed—The Land of Nod; 800/933-9904; landofnod.com. Wallpaper—Schumacher (to the trade); 800/523-1200; decoratetwaverly.com. Linens—Pine Cone Hill; www.pineconehill.com. Side table in hall, rug, throw, pillows on window seat, stone soap dish, pillows, lamp, coffee table, Indian blanket—J. Seitz & Co. (see previous). Mirror, sink—Waterworks; 800/899-6757; waterworks.com. Wicker furniture—Mainly Baskets; 800/647-3728; mainlybaskets.com. Rug—Acquisitions (see previous). Side table—Restoration Hardware; for more information; 800/762-1005; restorationhardware.com.

### SPLASHES OF SPRING

**Pages 130–133:** azaleas—White Flower Farm; P.O. Box 50, Route 63, Litchfield, CT 06759; 800/503-9624; whiteflowerfarm.com. Encore azaleas—Plantsbymail.com; 17325 County Road 68, Loxley, AL 36551; 866/964-2759; plantsbymail.com.